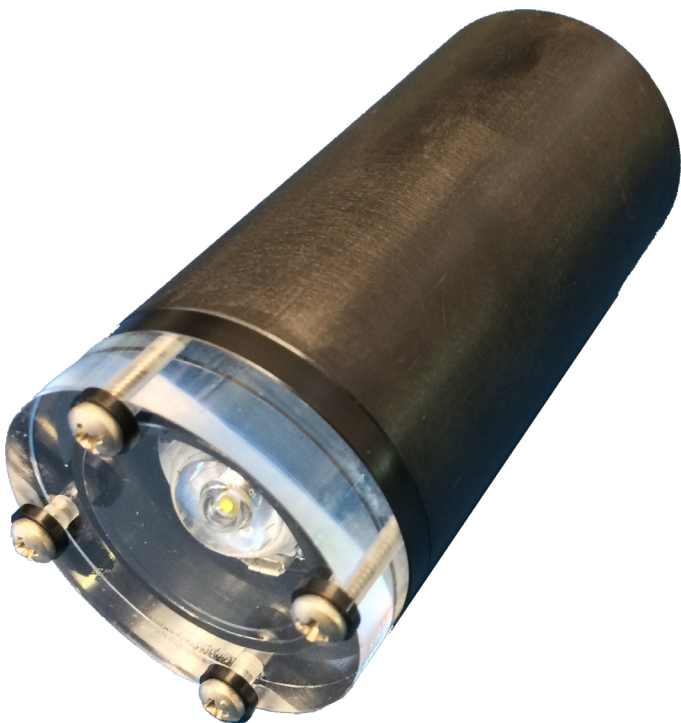


# Lanternfish

## Programmable Battery-Powered LED Light

### FEATURES

- ▶ Standalone underwater operation to 1,000m
- ▶ Rechargeable Li-ion battery pack
- ▶ Variable brightness
- ▶ Programmable intervalometer for preset lighting schedules
- ▶ Can be synched to video cameras, still cameras or other oceanographic field sensors
- ▶ Magnetic reed switch for on-deck or diver operation



*Technical specifications on reverse*

# Technical Specs

## Lanternfish

PARAMETER	LANTERNFISH
Model Number	ARI03
Depth Rating	1,000m (3,300ft)
Size	51mm dia. x 105mm L (2in. dia. x 4.125in L)
Output Lumens	350 lumens @ 5650K cool-white (various colors and white color temperatures available)
Beam Angle	120° (other beam angles available: 9°, 21°, 39°)
Battery	5,200mAh lithium-ion with overcharge/discharge protection and integral charging circuitry
Charger	Will recharge from a standard USB port or external 5VDC @ 500mA
Dimming	Linearly variable brightness level from 0–100%
Endurance	Dependent upon brightness level and duty cycle. Typical runtimes continuous: 7 hours @ 100%; 14 hours @ 50%; 28 hours @ 25%; 4 days @ 5%
Configuration Interface	USB 2.0 via Windows-based graphical configuration software (waterproof external connector available)
Scheduler Parameters	Start time/date, stop time/date, on time, off time, brightness level

